

eeese
air care

User manual
Dehumidifier Mark

Art. 2543



Thank you for choosing this product.
Please read this instruction manual before using it.



Read the user manual before use, refer to the corresponding section of these user instructions.



Recycle unwanted materials instead of disposing of them. All appliances and packages must be sorted and delivered to a regional recycling centre and processed in an environmentally friendly manner.



The product complies with the applicable EU directives and other provisions.

Table of contents

1. Safety instructions	54
2. Parts list	54
3. Before operation	55
4. Pour Water From Water Tank	56
5. Continuous Drainage	57
6. Operation Instructions	58
7. Cleaning	60
8. Storage	60
9. Troubleshooting	61
10. Technical specifications	62
11. Service	62
12. Warranty	63

1. Safety instructions

Warning

This appliance is intended for indoor use only in private homes. Any other use is not recommended by the manufacturer and may cause fire, electric shock, or other personal injury or damage.



Warnings



Wet hands are not allowed

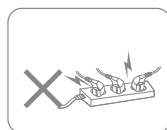


Warning

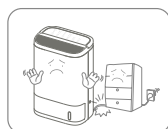
Power cord



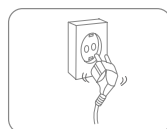
Do not try to unplug the power cord from the wall socket.



Do not connect the appliance to an overloaded extension lead.



Do not place heavy objects on the power cord in order to avoid safety risks.



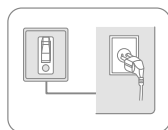
Do not use the appliance if the power cord cannot be securely fastened in the plug socket.



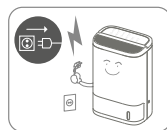
Do not attempt to replace the power cord, contact the authorised service workshop for repair.



Do not touch the plug with wet hands in order to avoid electric shock.



The socket must be grounded and properly secured.



Unplug it during lightning storms.

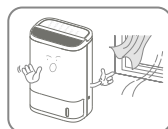
Location



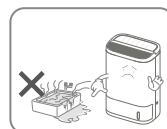
Do not place flammable and explosive objects around the appliance in order to avoid fire.



Place the appliance on a stable, flat surface.

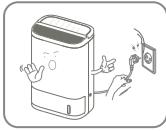


Do not use the appliance in locations with a draught.



Do not use the appliance in swimming pool or similar facilities in order to avoid safety hazard.

During use



Turn off the power and unplug the power cord before moving the device.



Do not pour water into the appliance in order to avoid malfunction.



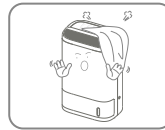
Children should be supervised to ensure that they do not play with the appliance.



Do not place heavy objects on the appliance in order to avoid malfunction.



The appliance must not be knocked over or subjected to impact or shock in order to avoid malfunction.



The appliance must not be covered when in use.

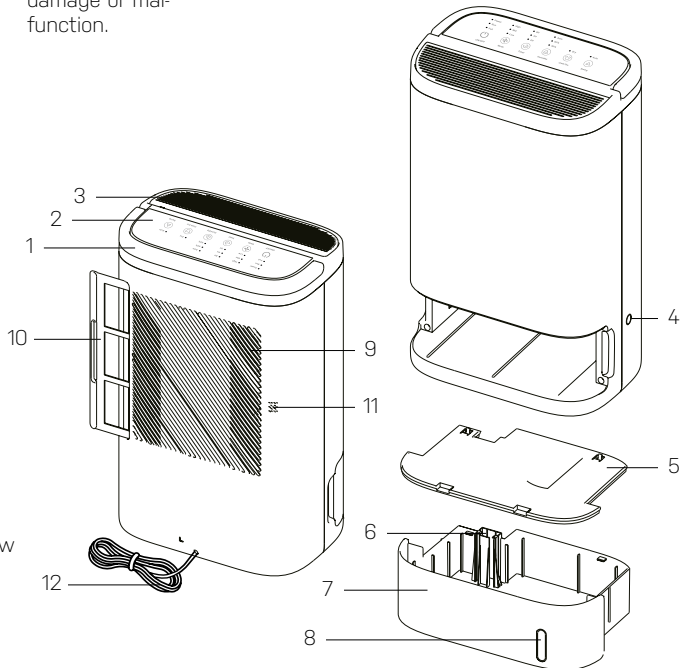


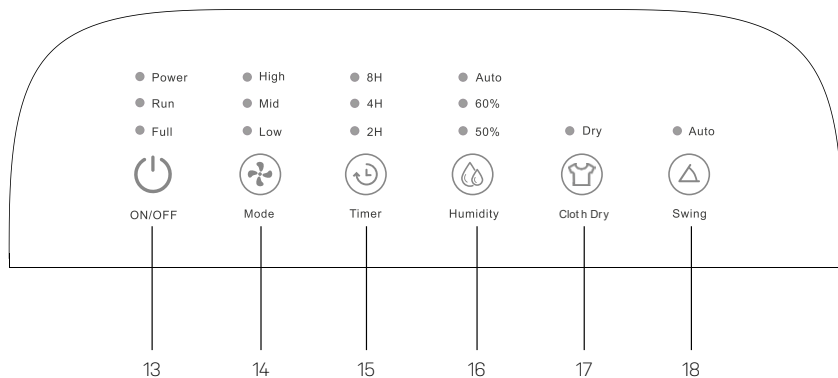
Do not place your hands on the air outlet in order to avoid damage or malfunction.

2. Parts list

Components

- 1. Handle
- 2. Control Panel
- 3. Air Outlet
- 4. Continuous Drainage Hole
- 5. Water Tank Cover
- 6. Float
- 7. Water Tank
- 8. Water Level Window
- 9. Air Inlet
- 10. Filter
- 11. Humidity Sensor
- 12. Power Cord

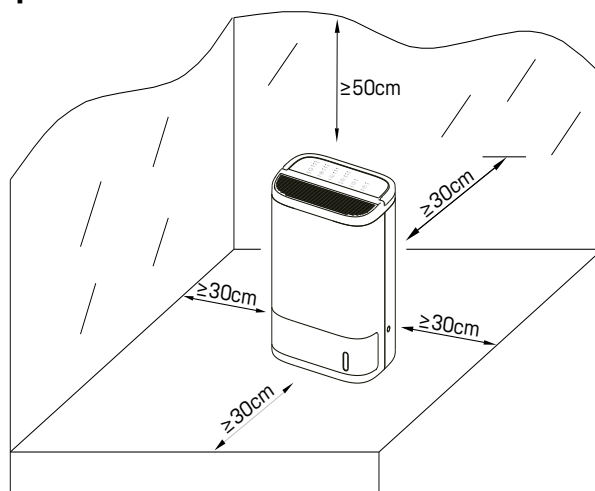




Control Panel

- 13. On/Off Button
- 14. Mode Button
- 15. Timer Button
- 16. Humidity Level
- 17. Cloth Dry
- 18. Swing Button

3. Before operation

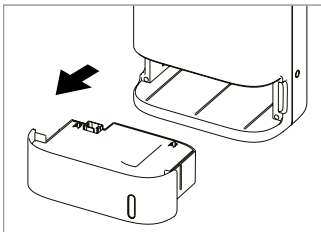


- Leave at least 30cm of space on the back and sides of the product, and at least 50cm of space above the product when using.
- Do not place the product under an air conditioner to prevent condensation water dropping into the product.
- Please do not use the continuous drainage if the temperature around the water pipe is below 0°C.
- Before using the continuous drainage, please keep the water pipe short and in place to ensure a smooth drainage.
- When the machine works in continuous drainage or remains unattended for a long time, please check every 2 weeks.
- Do not use hard objects to strike the product, especially the air outlet and air inlet.
- Please do not use clothes, curtains and other items to cover the air inlet and outlet or manually close the air deflector.
- Do not insert fingers or other things into the air outlet/inlet to prevent physical damage or trouble.
- Do not use this product when you are using an indoor spray repellent, or in a place filled with grease, flammable gas or chemical fumes.
- Ensure the product is unplugged if you need to move it.
- Do not try to repair, disassemble or transform the unit.
- This product is suitable for use in a private household and under normal working conditions. It will have stable performance after 30-60 minutes.

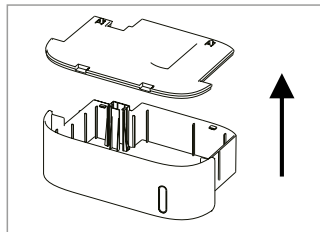
4. Pour Water From Water Tank

The water tank has maximum capacity of 2.5L with 7L per day working capacity. When the tank is full, the machine will stop dehumidifying immediately. The full indicator will keep flashing in orange.

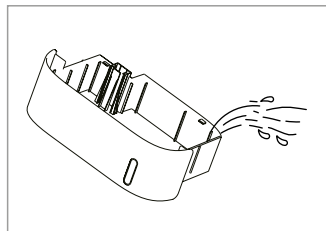
Turn off the machine, take out the water tank and pour out the water.



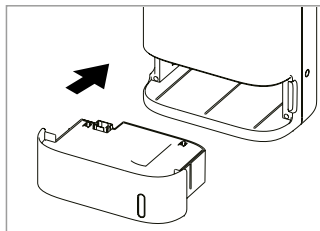
1. Take out the water tank.



2. Remove the water tank cover.



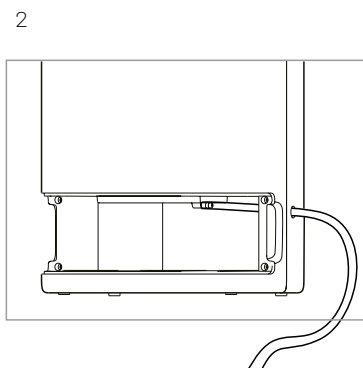
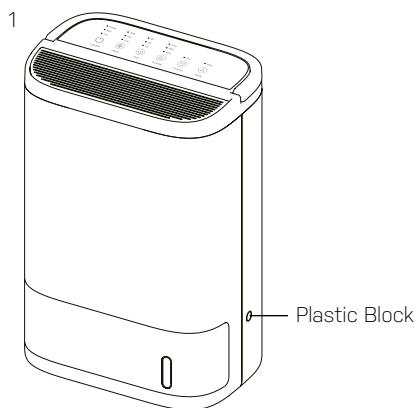
3. Pour water.



4. Reset the water tank and it will restart.

5. Continuous Drainage

1. Turn off the machine, take out the water tank and cut off the plastic block of the continuous drainage hole.
2. Extend the drain pipe from the continuous drainage hole to the inside of the machine and then insert the drain pipe into the drain hole from the mouth of the tank.
3. After resetting the water tank, it can restart to dehumidify. If the machine is turned on, without resetting the water tank, the machine will be in protected status.



Protected status: water full indicator and power indicator will keep flashing.



6. Operation Instructions



Connect the power cord to the wall socket

All LED indicators on the panel will be on for 1s and then off, at the same time the buzzer will ring for three times. When the unit connects with power, the power indicator turns red.

Switch On / Switch Off The Unit [Power button]

-  Press the power button to turn on the unit, the unit will start dehumidifying and the wind deflector will go up.
-  Press the power button again to turn off the unit, the power indicator turns red, and other indicators will be off.

The unit will keep working for 4 minutes then turn off, and the wind deflector rotates down to its original position.



The machine can record the dehumidify mode and humidity mode of last time

Mode Setting Function

Press the mode button to adjust the wind speed among Low, Mid and High mode, the corresponding indicator turns on. Press the button again, it will start from beginning.

-  High
-  Mid
-  Low



Mode



Notice: When the unit dehumidifies in any humidity mode, the user could set wind speed and timer at will.

Timing Shutdown Function

When the unit is dehumidifying it is possible to press the timer button to set 2h, 4h and 8h timer or cancel. Press again, it will start from the beginning.

1. The unit stops automatically when the water tank is full even if the unit is in timer mode. The remaining time will still be recorded. After emptying the water tank, the unit will keep working in the remaining hours.

2. When the water tank is not full, the timer can be set freely. If the unit stops working or is cut off, it needs to be reset.

- High
- Mid
- Low



Mode

Humidity Setting function

(1) Press the humidity button to dehumidify under the condition of RH50%, RH60% or Auto , then the corresponding indicator turns on. Press the button again, it will start from beginning.

(2) When the ambient humidity is lower than the setting humidity, the unit will stop dehumidifying. When the ambient humidity is higher than the setting humidity, the unit will start dehumidifying again.

- Auto
- 60%
- 50%



Humidity



When the unit is in the status of automatic dehumidification, its operation would not be effected by the change of ambient humidity .

Cloth Dry Setting

Press the cloth dry button, the unit will work with strong mode, user could set the timer and the humidity, but the function of dehumidification can't be set.

If the unit does not work in timer mode, the unit will keep working for 10 hours and then stop for half an hour, then it will restart automatically.

- Dry



Cloth Dry

Swing Setting Function

When the unit is dehumidifying, the position of the wind deflector can be controlled by the fan setting button. Press the fan setting button to set the wind deflector between swing and stop status. The wind deflector can swing or stop at any angle within 90 degrees.

● Auto



Swing

7. Cleaning

Ensure the machine is turn off and unplugged before maintenance and cleaning. Do not immerse the dehumidifier in water or any liquid. Do not use abrasive, corrosive or flammable cleaners (such as bleach or alcohol) to clean any part of the machine.

1. Ensure the machine is turned off and unplugged.
2. Use a soft cloth with neutral cleanser to clean away any dust or debris from the surface of the unit and air inlet/outlet. Please do not drop any water into the machine when clean the air outlet.
3. Pull out the water tank and open the cover to clean the water tank.
4. If the filter is blocked by dust, the dehumidification effect will be weakened. Please clean it twice a week.
 - a. Take out the filter.
 - b. Clean the filter with a vacuum cleaner or with water. Do not place the filter in high temperature or under sunlight to dry out.
 - c. After drying, please install the filter.

8. Storage

1. Ensure the machine is power-off and unplugged.
2. Ensure the water tank is clean and dry.
3. Use a soft cloth with neutral cleanser to clean away any dust or debris from the surface of the air inlet/outlet.
4. After the machine is completely dry, put on the bag and place it in a cool and well-ventilated place.
5. If you do not use the machine for a long time, you should turn on the machine for a few minutes from time to time to ensure a good performance.

9. Troubleshooting

Before contacting technical support, check the following:

Situation	Reason
Not working	Is it plugged into a power socket?
	Is there a power outage?
	Is the home leakage switch or fuse cut off?
	Is the water tank full?
Poor performance (less water in the tank)	Is the filter blocked?
	Is the door opened?
	Is there any obstacle blocking the air inlet/ outlet?
	Is there any other equipment releasing steam indoor?
The air volume is reduced	Is the filter too dirty so that it blocks the air to enter inside?
	Is the air inlet/outlet of the machine blocked by something?
Significant noise	Is there anything stuck in the fan in the air outlet?
	Is the machine tilted?
Leakage	Is the machine tilted or dumped?
	Is there any water in the tank when moving the machine?
	Is the water stop float indicator intact?
Still working after power off	The unit continues to work for 4 min after power off, this process is the delaying work setting to make the hot air come out fully. It is a normal phenomenon to protect the machine.
There is coming out hot air with smell	When the temperature is high between the heat exchanger and the cold exchanger, the smell will emit temporarily. It is a normal phenomenon.

IMPORTANT!

Please do not try to repair the dehumidifier by yourself to avoid any risk.

10. Technical specifications

Model Mark, Item No.	2543
Max working area, m ²	40
Recommended working area, m ²	2-40
Capacity 30°C/RH80% L/day	7
Air flow capacity low m ³ /h	63
Air flow capacity medium m ³ /h	97
Air flow capacity high m ³ /h	126
Power (In operation) W	650
Power supply V/Hz	220-240/50-60
Power consumption at low ventilation W	330
Power consumption at medium ventilation W	540
Power consumption at high ventilation W	650
Timer h	2 / 4 / 8
IP code	IPX0
Fan speed	3
Noise Level low dB(A)	38
Noise Level high dB(A)	53
Water Tank L	2.5
Operating temperature °C	-10 - 50
Techology	Adsorption
Filter	Washable
Drain hose included	No
Drain hose diameter (mm)	10
Net Weight kg	5.75
Gross Weight kg	6.90
Length of cable, cm	175
Product Size (WDH) mm	300 x 200 x 433
Packing Size (WDH) mm	343 x 243 x 533

The above technical data is for reference only. We reserve the right to change them without notice.

11. Service

If you have any questions or need more information, please feel free to call

Customer service on +45 6916 3200

If you need service or to make a warranty claim, you must create a case directly in our support system. Go to the home page under SUPPORT.

12. Warranty

Limited warranty

We guarantee that all parts are free of defects in materials and workmanship for a period of two years from the date of purchase. The warranty covers only material or manufacturing defects that prevent the product from being able to be installed or operated in a normal way. Defective parts will be replaced or repaired.

The warranty does not cover transportation damage, any use other than what is intended, damage caused by incorrect assembly or improper use, damage caused by impact or other error, damage caused by frost cracking or by improper storage.

The warranty becomes void if the user modifies the product.

The warranty does not include product-related damage, property damage or general operational loss.

The manufacturer's liability cannot exceed the repair or replacement of defective parts and does not include labour costs to remove and reinstall the defective part, transportation costs to and from the service centre, and all other materials necessary to carry out the repair.

This warranty does not cover failure or malfunction as a result of the following:

- If the unit is not installed, operated or maintained in accordance with the instruction manual supplied with the unit .
- The workmanship of any installation of the unit.
- Misuse, alteration, accident, fire, flood, lightning strike, rodents, insects, negligence or unforeseen events.
- Use of non-factory authorised parts or accessories in conjunction with the product.

Limitation of liability

This is the only warranty provided by the manufacturer. No one is authorised to make any other warranties on our behalf.

This warranty is in lieu of all other warranties, expressed or implied, including but not limited to any implied warranty of fitness for a particular purpose and saleability. We expressly disclaim any liability for consequential, incidental, indirect, or consequential damages resulting from any breach of the express or implied warranties.

This warranty gives you specific legal rights, which may vary by country.

Complaints

In the event of any warranty claim a valid purchase receipt must be presented. Read about making warranty claims in the SERVICE section.



Thank you for choosing this product.
Please read this instruction manual before using it.